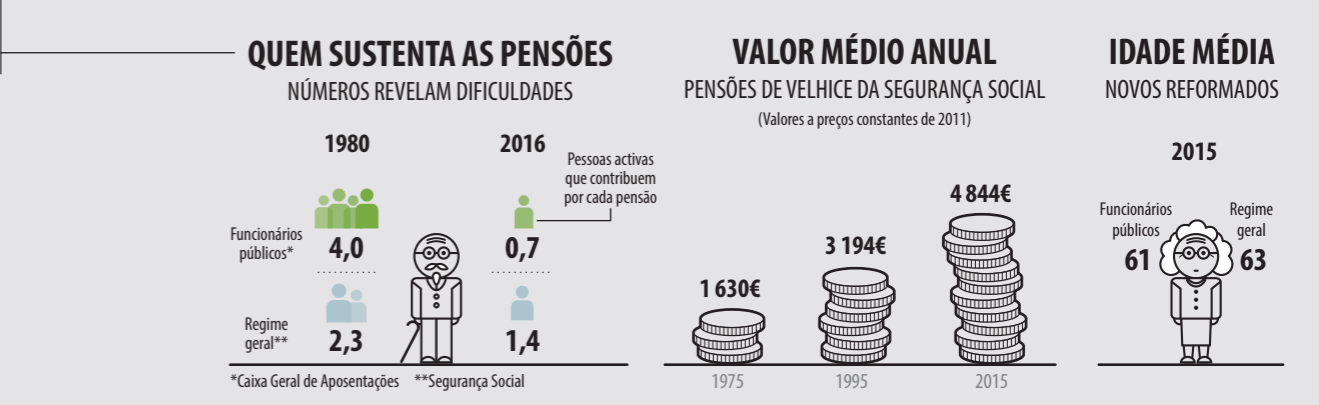
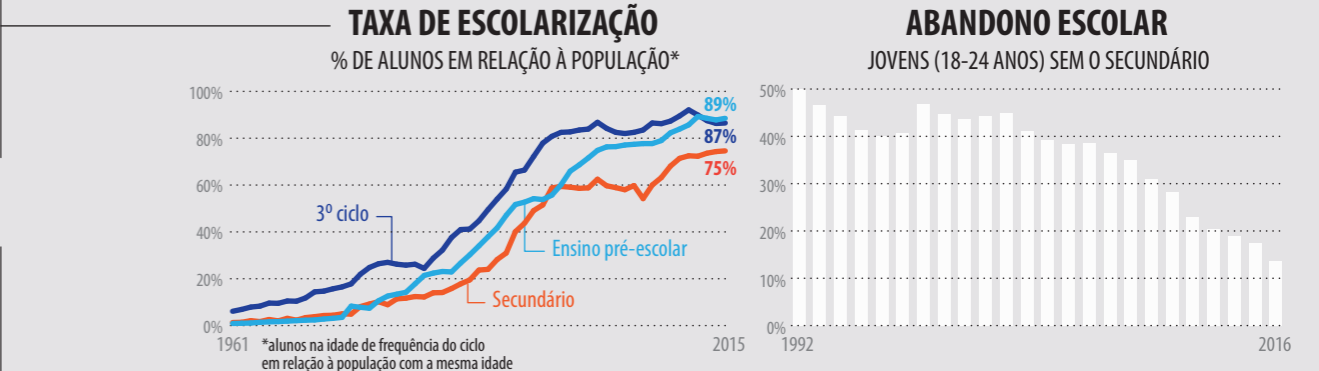
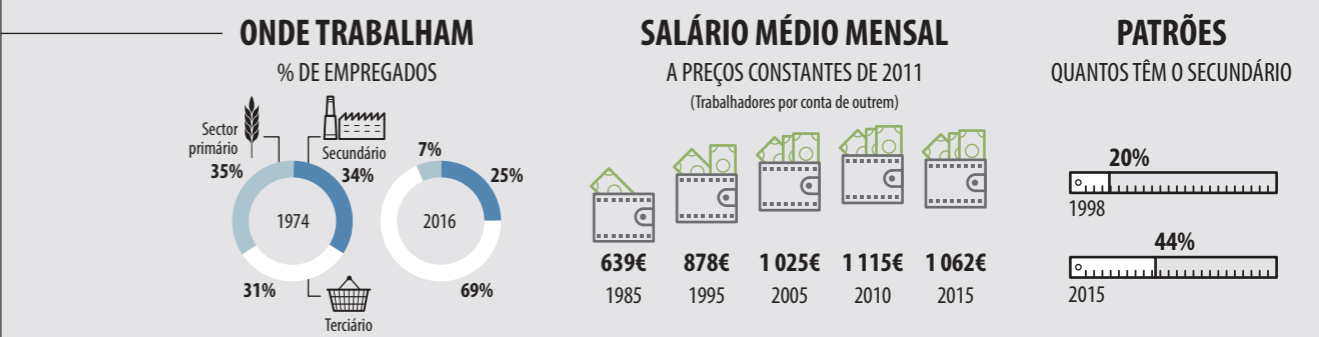
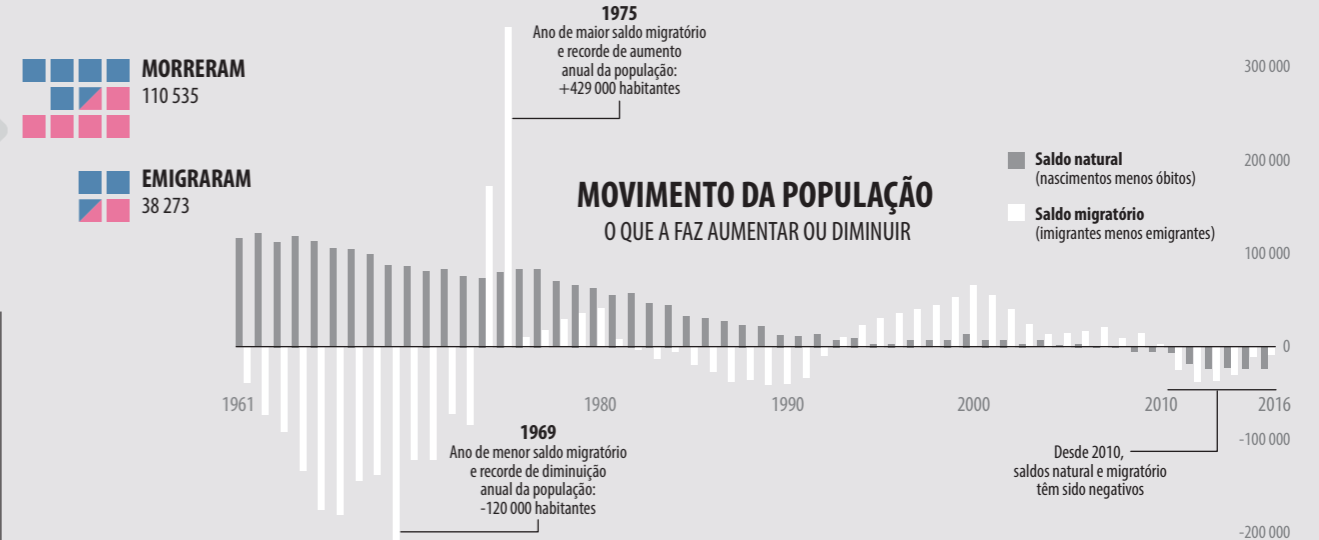
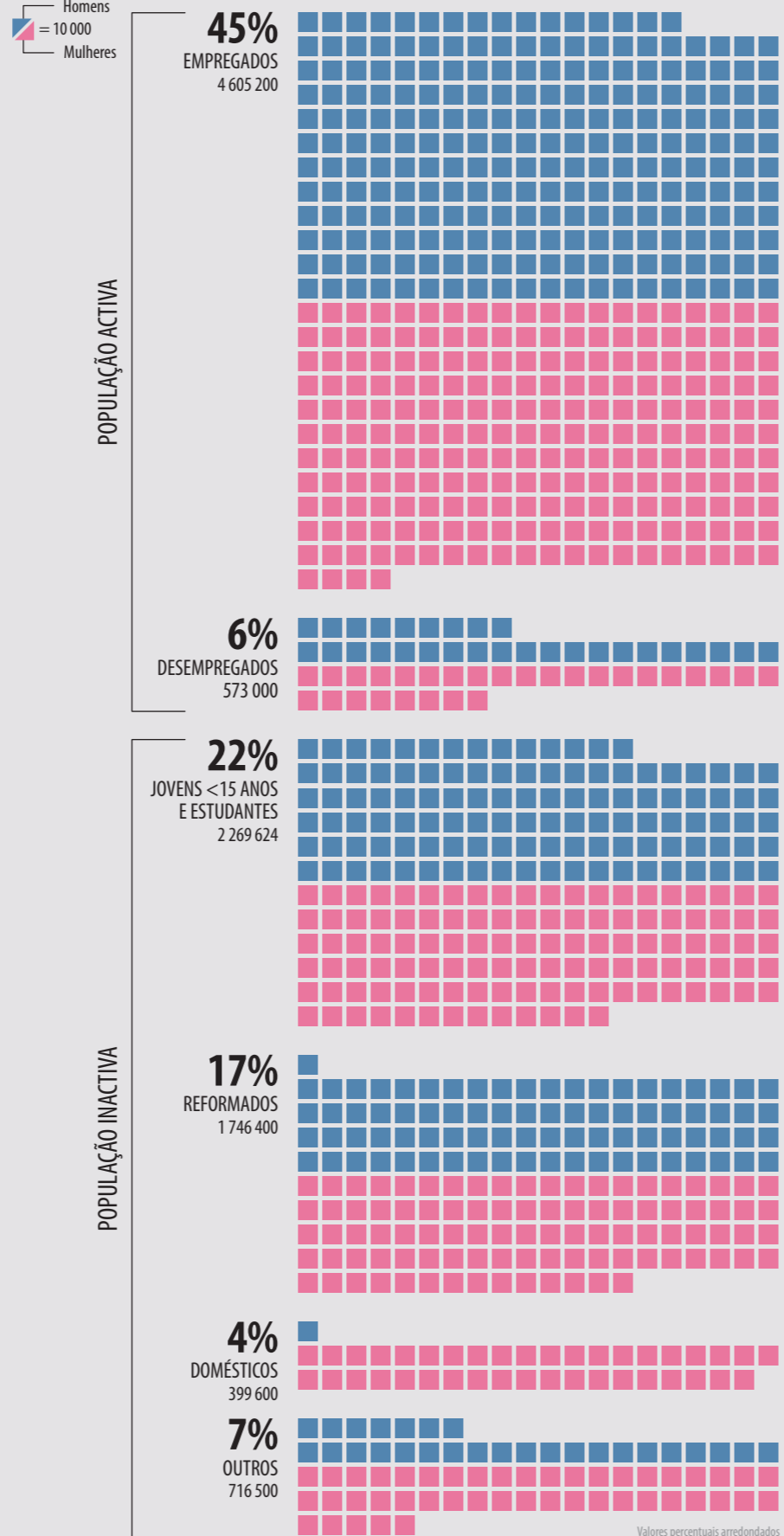
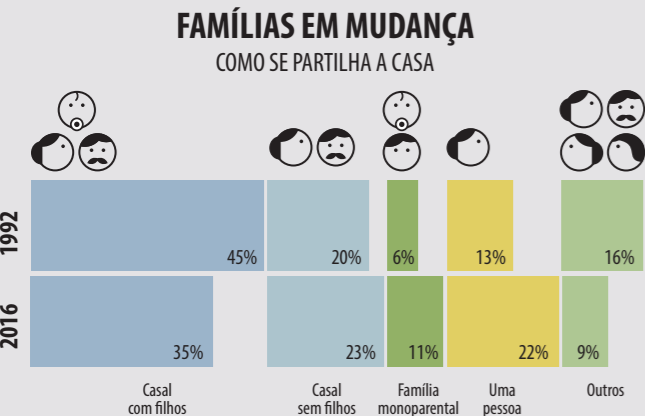
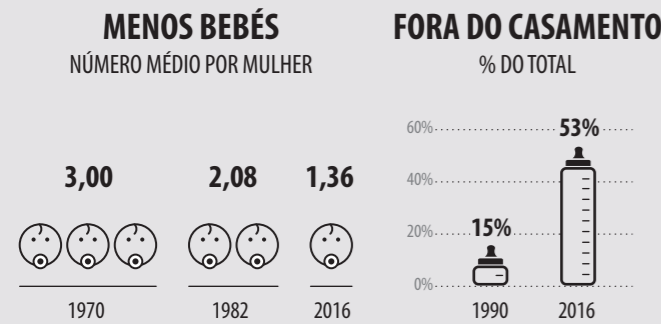
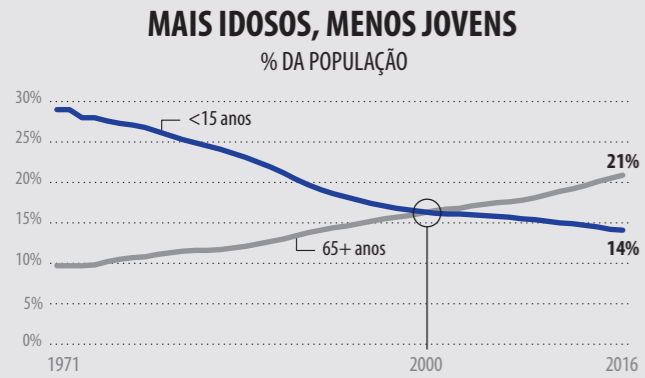


QUEM SOMOS, COMO VIVEMOS

UM RETRATO DA POPULAÇÃO DE PORTUGAL EM 2016 E AO LONGO DO TEMPO A PARTIR DE INDICADORES ESTATÍSTICOS SELECIONADOS



Nota: dados dos imigrantes/emigrantes referem-se aos que entraram no país com intenção de nele residir por mais de um ano (permanentes)